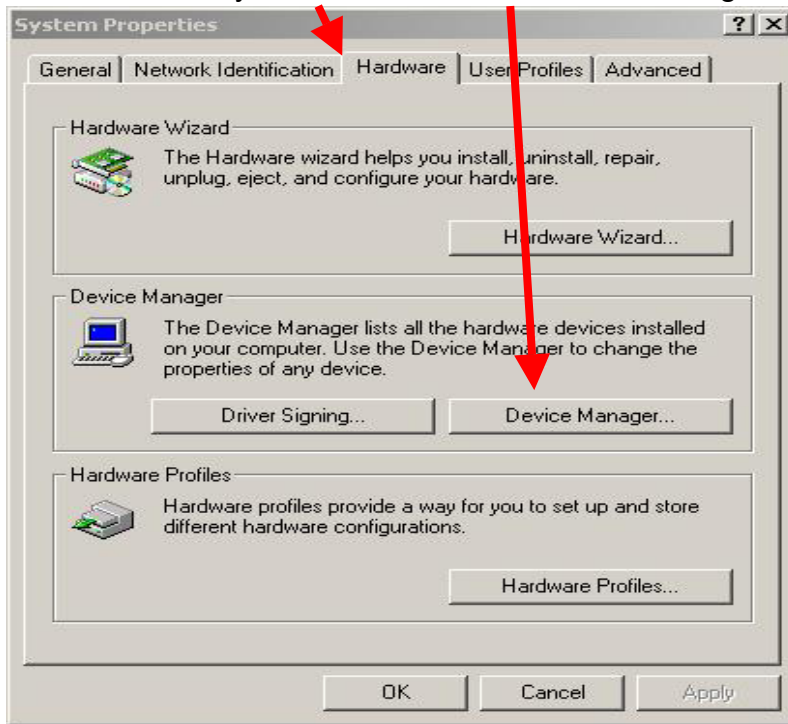


Directions for Driver Update (SBT-UFDB)

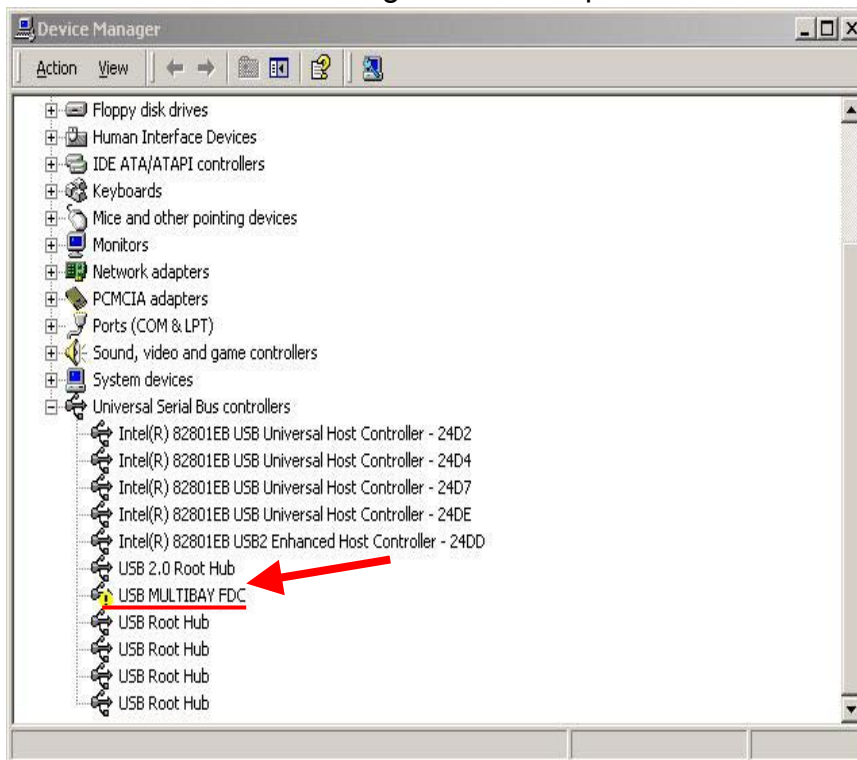
Step 1

Control Panel=>System=>Hardware=>Device Manager



Step 2

Click on the error device=>right click=>Properties



Step3:

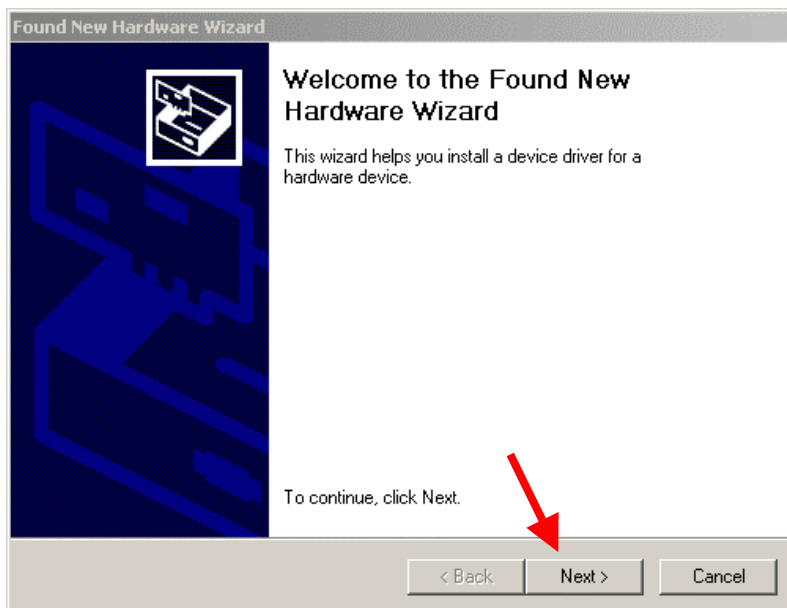
Directions for Driver Update (SBT-UFDB)

Driver=>Click Update Driver



Step4

Click=>Next



Directions for Driver Update (SBT-UFDB)

Step 5:

Select Search for suitable driver for my device [recommended]

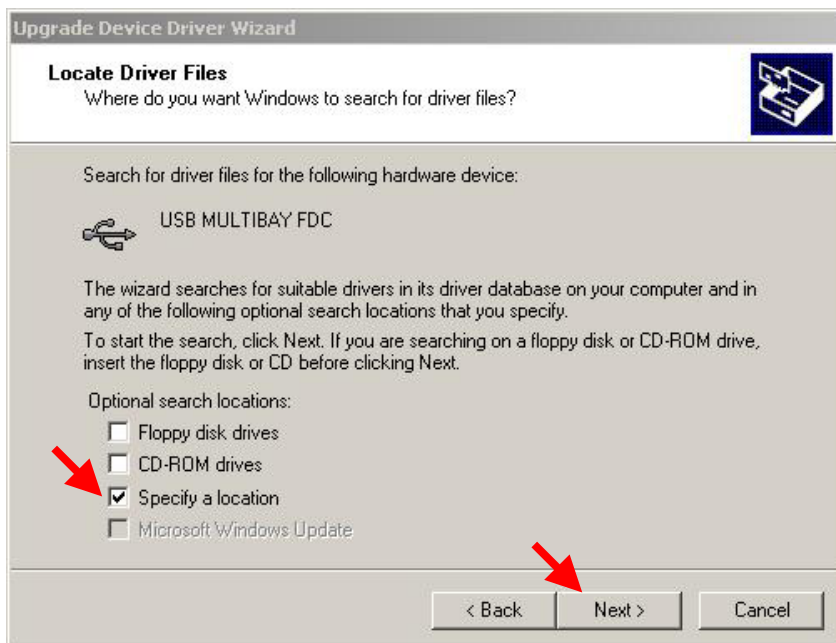
Click=>Next



Step 6:

Select specify a location

Click=>Next

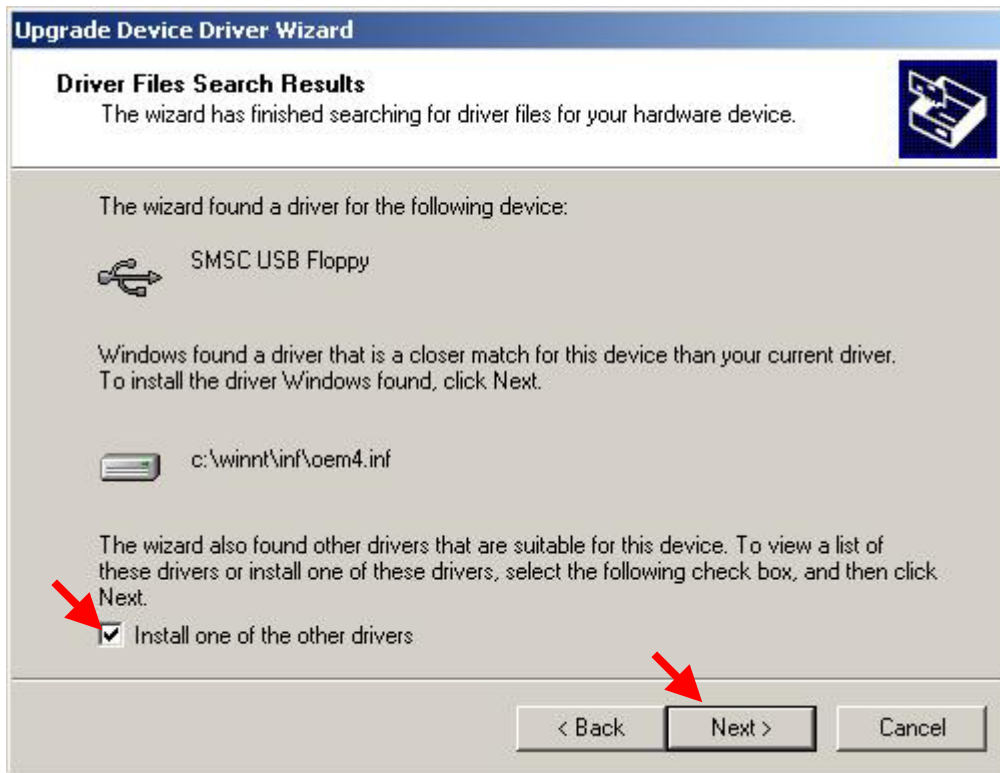


Step 7:

Directions for Driver Update (SBT-UFDB)

Select install one of the other drivers

Click=>Next



Step 8:

Select =>E:\USB1.1 Floppy\Driver\WIN2K

Click OK



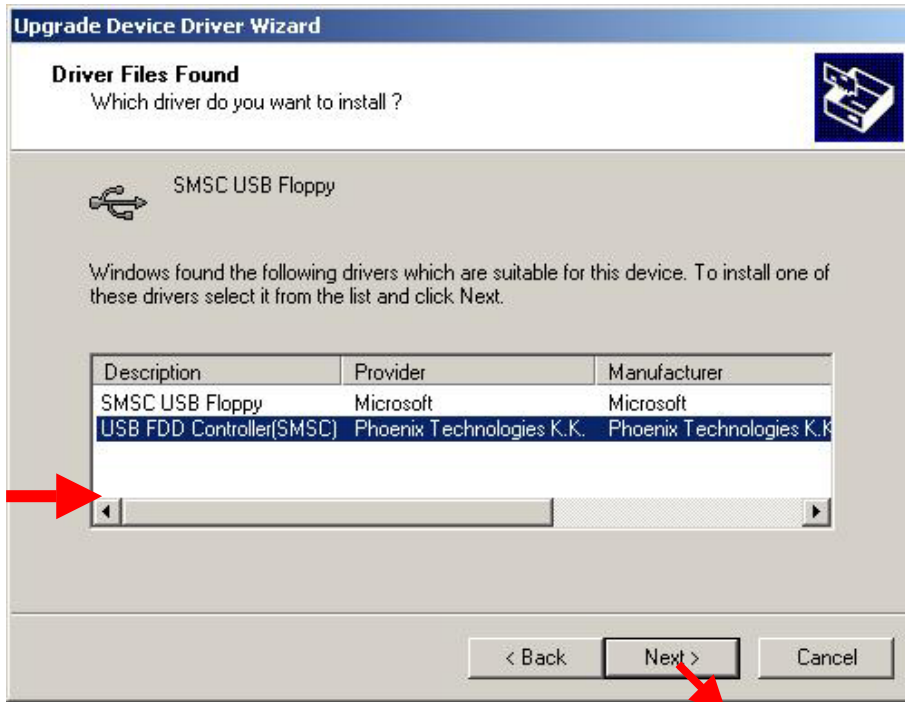
E: is the Drive letter of your PC's CD-ROM which contain device driver CD disk

Step 9:

Select Description USB FDD Controller[SMSC]

Directions for Driver Update (SBT-UFDB)

Click=>Next



Step 10:

Click finish

