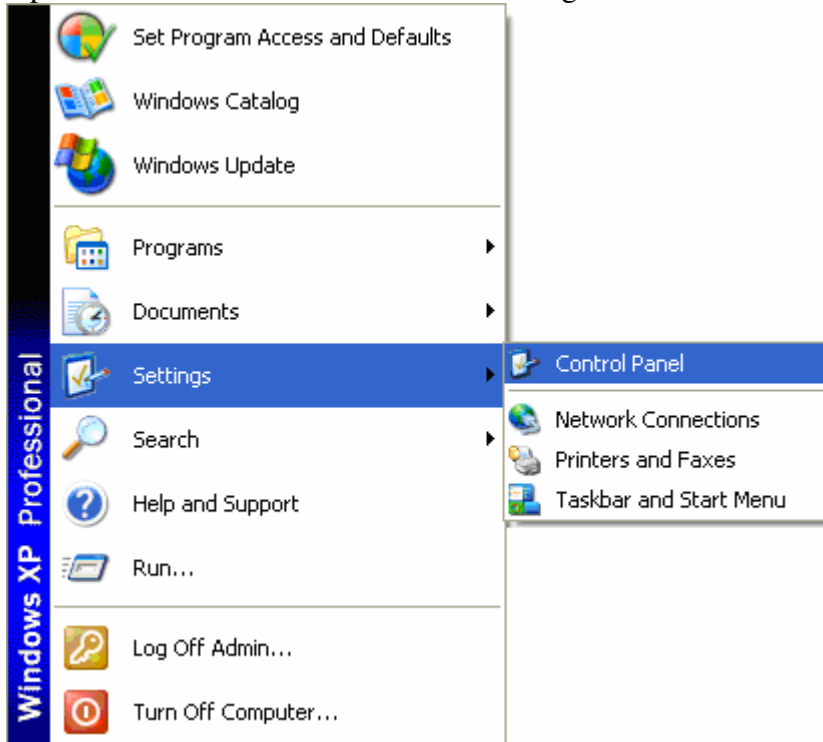
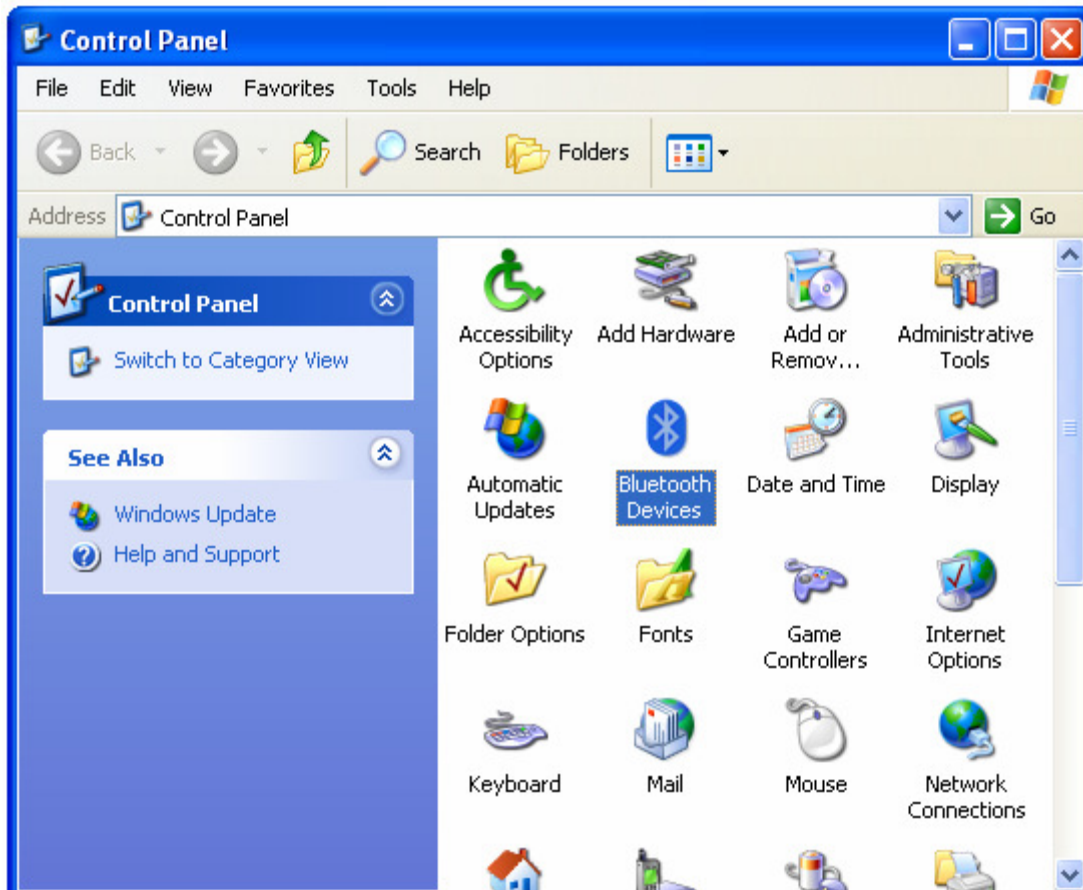


# How to Install Bluetooth Wireless Keyboard

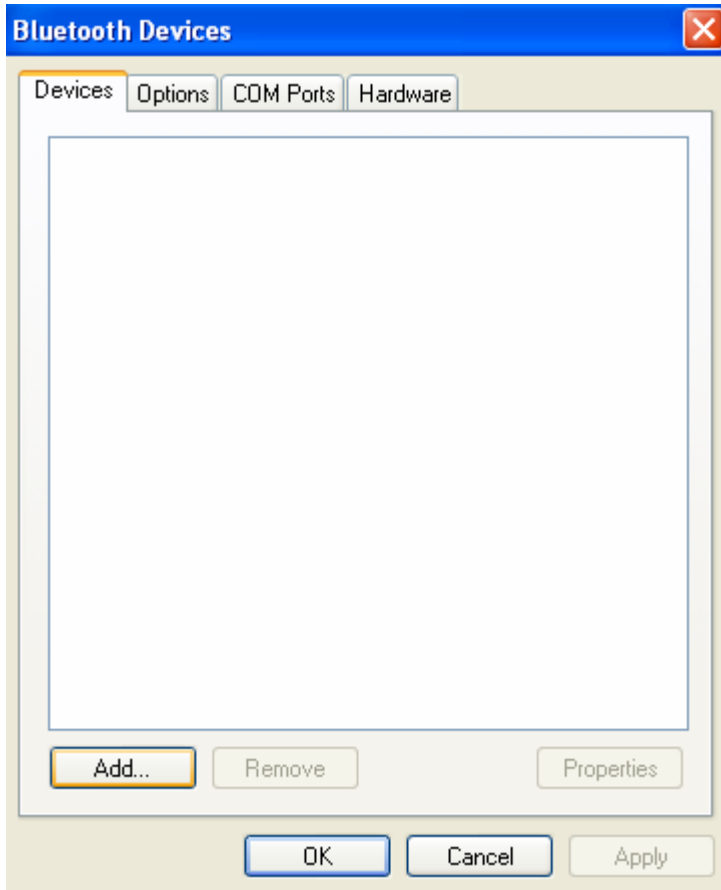
1. Open **Control Panel** – Under Start ◇ Settings ◇ Control Panel



2. Select **Bluetooth Devices**



3. Select **Add**

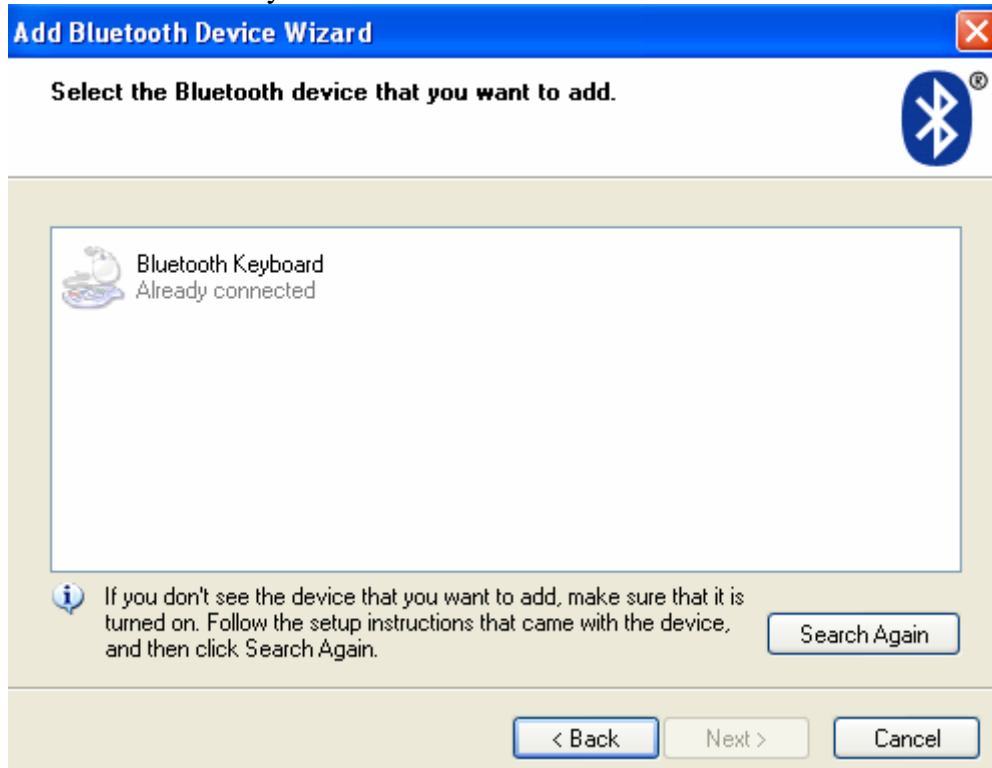


4. Check (My device is set up and ready to be found.).



5. Click Next.

6. Select Bluetooth Keyboard.

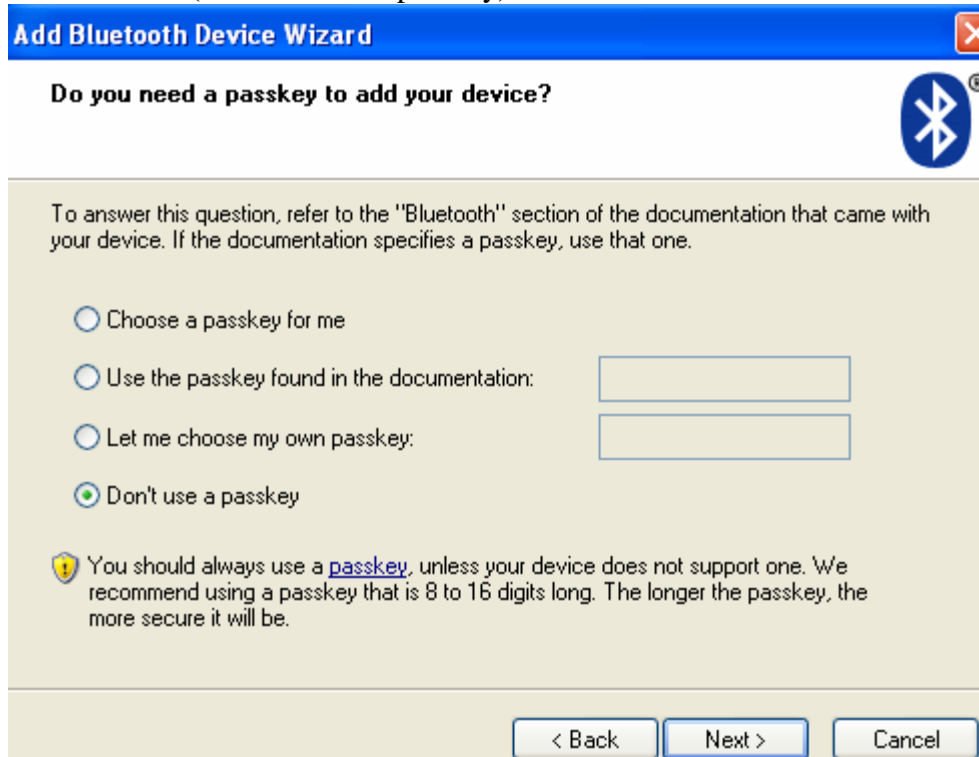


7. If device is not shown, press button on back of Bluetooth Keyboard, until blue light in front is flashing, and select Search Again.

8. Select Bluetooth Keyboard.

9. Click Next.

10. Click the box (Do NOT use a passkey).



11. Click Next.

12. After installation, click Finish.

